



New Kinpo Group

xPON Product Line-Up

Presenter:

Bangkok · Taipei · Manila · Wujiang · Dongguan · Yueyang · Singapore
Kuala Lumpur · Senai · Manaus · Indiana · San Diego · Reynosa

GPON Product Line-Up

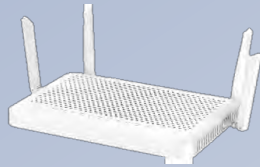


HGR601D1



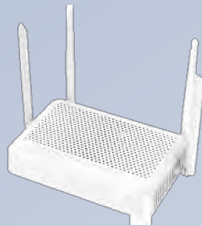
- GPON SFU
- 1x GPON Optical Link (Bosa on Board)
- 2.5GE x 1

HGE5284-C21



- GPON Wireless Voice GW
- 1x GPON Optical Link (Bosa on Board)
- 2x2, 4x4 11n/ac DBDC
- 1GE x 4

HGE5294-X42



- GPON Wireless Voice GW
- 1x GPON Optical Link (Bosa on Board)
- 2x2, 3x3 11ax DBDC
- GE x4 / FXS x2)
- 4 External Antenna

HGB3604-X54



- GPON Wireless Voice GW
- 1x GPON Optical Link (SFP)
- 2x2(3x3), 4x4 11ax DBDC
- GE x4 / FXS x1(Optional)
- 2.5GE WAN/LAN (Optional)
- 4 External Antenna



HGR601D1_GPON 2.5GE ONU Modem



➤ Product Overview

HGR601D1 Gigabit Passive Optical Network (GPON) Optical Network Terminal (ONT) is the best choice to provide various Internet services at a very reasonable cost. HGR601D1 supports 1 GPON Port and 2.5 Gigabit Ethernet. This device complies with GPON ITU-T G.984/G.988 standards and PRC communications industrial standards for GPON Access technology requirements. With Plug and Play design, it's easy for the installation and maintenance of GPON deployment.

In particular, HGR601D1 supports IOP with several OLTs in the market with one FW, helping optimal GPON deployment without needing to be dependent on specific OLT.

By connecting to the router with the support of 2.5GE LAN port, the end-user can experience the download speed of 2.5Gbps.



		Requirements	Notes
System Resource	Main SoC	RTL9601D	
	Flash Memory	NOR SPI 16MB	
	DRAM	64MB (Embedded)	
GPON	Downstream	Wavelength: 1490nm Max Data Rate: 2.5Gbps	ITU-T G.984.2 Class B+ Compliant (w/ BOSA Protection)
	Upstream	Wavelength: 1310nm Max Data Rate: 1.25Gbps	ITU-T G.984.2 Class B+ Compliant (w/ BOSA Protection)
Front Interfaces	LED	4 x LEDs	Power(G), Alarm(R), ETH(G), Connection(G)
Rear Interfaces	Ethernet	1x 2.5Gbps LAN	RJ-45, Ethernet port x 1
	xPON	1x GPON – BoB design	SC/APC
	DC-Jack	1x Power Jack	
	On/Off Switch	1 x Push Button for Power on/off	
	Reset	1x Reset Button	
Power	Type	External Power Supply	12V/0.5A , K.21 extended (6KV), Power cord 1.5m
Dimension	L x W x H (mm)	90x80x35 mm	

• Design may change based on customer's requirements

HGE5284_GPON ONT 4-Ports GE with AC2100



➤ Product Overview

HGE5284-C21 GPON Home Gateway Unit (HGU) is a single-family service delivery device that combines ONT functionality with Home Gateway capabilities; this combination delivers the high-speed services and exceptional networking performance subscribers expect from a fiber-based system.

The Home Gateway Unit integrates a 2.5 GPON WAN interface with Layer 3 switching and routing to efficiently manage premises network traffic. HGE5284-C21 features 4 Gigabit Ethernet (GE) ports to match a variety of indoor single-family deployment scenarios.

In particular, HGE5284-C21 supports IOP with several OLTs in the market with one FW, helping optimal GPON deployment without needing to be dependent on specific OLT.



* Design may change based on customer's requirements

		Requirements	Notes
System Resource	Main SoC	EN7528	
	Flash Memory	NAND 128MB	
	DRAM	DDR 256MB	
GPON	Downstream	Wavelength: 1490nm Max Data Rate: 2.5Gbps	
	Upstream	Wavelength: 1310nm Max Data Rate: 1.25Gbps	
Wireless	Ant	4x4 External	2x Dual band single feed and 2x 5G single band single feed
	2.4GHz	2x2 802.11n	
	5GHz	4x4 802.11ac	
Interfaces	xPON	1x GPON	SC/APC
	Ethernet	4x 1Gbps LAN	RJ-45
	Voice	2 x POTS(FXS)	RJ-11
	Reset	1x Reset Button	Factory reset
	WPS	1x WPS Button	2.4GHz and 5GHz simultaneously
	DC-Jack	1x DC Jack	
Power	Type	12V/2A Wall-mount type EPS	

HGE5294_GPON 11ax Dual-band HGU GW



➤ Product Overview

HGE5294-X42 GPON Home Gateway Unit (HGU) is a single-family service delivery device that combines ONT functionality with Home Gateway capabilities; this combination delivers the high-speed services and exceptional networking performance subscribers expect from a fiber-based system.

The Home Gateway Unit integrates a 2.5 GPON WAN interface with Layer 3 switching and routing to efficiently manage premises network traffic. HGE5294-X42 features 4 Gigabit Ethernet (GE) ports to match a variety of indoor single-family deployment scenarios.

In particular, HGE5294-X42 supports IOP with several OLTs in the market with one FW, helping optimal GPON deployment without needing to be dependent on specific OLT.



* Design may change based on customer's requirements

		Requirements	Notes
System Resource	Main SoC	EN7529CT	
	Flash Memory	NAND 256MB	
	DRAM	DDR 512MB	
Wireless	Ant	4 External	1x Dual band single feed and 3x single band single feed
	2.4GHz	2x2 802.11ax	
	5GHz	3x3 802.11ax	
Front Interfaces	LED	Single LEDs x 8ea, Dual LEDs x 3ea, RGB x 1ea	POWER, INTERNET, PON, LOS, LAN1~4, WAN/LAN(for HPS11-2G model), USB, 2.4G WiFi, 5G WiFi, TEL 1/2
	WPS	1x WPS Button	2.4GHz and 5GHz simultaneously
Rear Interfaces	PON	1x GPON – BoB design	SC/APC
	Ethernet	4x 1Gbps LAN	RJ-45
	Reset	1x Reset Button	Factory reset
	FXS	2x FXS Port	
	USB	1x USB 2.0	
	DC-Jack	1x DC Jack	
Power	Type	12V/2A Wall-mount type EPS	
Dimension	L x W x H (mm)	220X147X45mm	

HGB3604_GPON 11ax Dual-band HGU GW



➤ Product Overview

HGB3604-X54 GPON Home Gateway Unit (HGU) is a single-family service delivery device that combines ONT functionality with Home Gateway capabilities; this combination delivers the high-speed services and exceptional networking performance subscribers expect from a fiber-based system.

The Home Gateway Unit integrates a 2.5 GPON WAN interface with Layer 3 switching and routing to efficiently manage premises network traffic. HGB3604-X54 features 4 Gigabit Ethernet (GE) ports to match a variety of indoor single-family deployment scenarios.

In particular, HGB3604-X54 supports IOP with several OLTs in the market with one FW, helping optimal GPON deployment without needing to be dependent on specific OLT.



<HPS11>
4x 1Gbps LAN

<HPS11-2G>
1x 2.5Gbps LAN
4x 1Gbps LAN

* Design may change based on customer's requirements

		Requirements	Notes
System Resource	Main SoC	BCM68360	
	Flash Memory	NAND 256MB	
	DRAM	DDR 512MB	
Wireless	Ant	4x4 External	2x Dual band single feed and 2x 5G single band single feed
	2.4GHz	2x2 802.11ax	
	5GHz	4x4 802.11ax	
Front Interfaces	LED	Single LEDs x 7ea, Dual LEDs x 3ea, RGB x 1ea (8 single LEDs for HPS11-2G model)	PWR, INTERNET, PON, LOS, LAN1~4, WAN/LAN(for HPS11-2G model), USB, 2.4G WiFi, 5G WiFi
	WPS	1x WPS Button	2.4GHz and 5GHz simultaneously
Rear Interfaces	PON	2.5G GPON SFF type	
	Ethernet	4x 1Gbps LAN 1x 2.5Gbps WAN/LAN (optional)	RJ-45
	Reset	1x Reset Button	Factory reset
	FXS	1x FXS Port	Optional
	USB	1x USB 2.0	
	DC-Jack	1x DC Jack	
Power	Type	12V/2A Wall-mount type EPS	
Dimension	L x W x H (mm)	200X140X40mm	

HGB2524-X54_GPON 11ax Dual-band HGU GW



➤ Product Overview

HPB2524-X54 GPON Home Gateway Unit (HGU) is a single-family service delivery device that combines ONT functionality with Home Gateway capabilities; this combination delivers the high-speed services and exceptional networking performance subscribers expect from a fiber-based system.

The Home Gateway Unit integrates a 2.5 GPON WAN interface with Layer 3 switching and routing to efficiently manage premises network traffic. HGB2524-X54 features 4 Gigabit Ethernet (GE) ports to match a variety of indoor single-family deployment scenarios.

In particular, HGB2524-X54 supports IOP with several OLTs in the market with one FW, helping optimal GPON deployment without needing to be dependent on specific OLT.



<HPS11-2GT>
1x 2.5Gbps LAN
4x 1Gbps LAN

* Design may change based on customer's requirements

		Requirements	Notes
System Resource	Main SoC	BCM68252	
	Flash Memory	NAND 256MB	
	DRAM	DDR 512MB	
Wireless	Ant	4x4 External	2x Dual band single feed and 2x 5G single band single feed
	2.4GHz	2x2 802.11ax	
	5GHz	4x4 802.11ax	
Front Interfaces	LED	Single LEDs x 9ea, Dual LEDs x 1ea, RGB x 1ea	POWER, INTERNET, PON, LOS, LAN1~4, USB, 2.4G WiFi, 5G WiFi
	WPS	1x WPS Button	2.4GHz and 5GHz simultaneously
Rear Interfaces	PON	1x GPON – BoB design	SC/APC
	Ethernet	3x 1Gbps LAN 1x 2.5Gbps LAN	RJ-45
	Reset	1x Reset Button	Factory reset
	USB	1x USB 2.0	
	DC-Jack	1x DC Jack	
Power	Type	12V/2A Wall-mount type EPS	
Dimension	L x W x H (mm)	200X140X40mm	

10G PON Product Line-Up



HNB5802



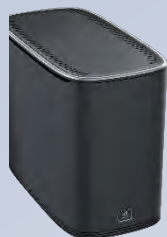
- 10G EPON ONU SFU w/ Voice
- 1x 10G Optical Link (Bosa on Board)
- 10GE x 1 / GE x 1
- FXS x 2 (Optional)
- DPoE 2.0 Support

HNB5804-X60



- 10G xPON 11ax Dual-band Voice GW
- 1x 10G Optical Link (Bosa on Board)
- 4x4, 4x4 11ax DBDC
- 10 GE x1 / GE x3
- FXS x 2

HNB5804-XE110T



- XGS-PON 11ax Tri-band Voice GW
- 1x 10G Optical Link (SFP+ Cage)
- 4x4, 4x4+4x4 11ax Tri-Band
- 5 GE x1 / GE x3 (Inc. 1G WAN x1)
- FXS x 2 / USB2.0 x 1



HNB5802_10G xPON ONU Modem



➤ Product Overview

HNB5802 Passive Optical Network (PON) ONT supports residential high-speed data and Internet Protocol television (IPTV) services all over a single optical fiber in one cost-effective, easy-to-install unit for indoor applications.

It complies with PON Standard. The ONT receives downstream data at 8.6 Gbps over a wavelength of 1577 nm and sends upstream data at 8.6 Gbps over a wavelength of 1270 nm. And this device also support eBBU I/F and DPOE 2.0 standard.



* Design may change based on customer's requirements

		Description	Remark
System Resource	Main SoC	BCM68580X	
	Flash Memory	NAND 256MB	
	DRAM	DDR 512MB	DDR3 256MB x 2
Front Interfaces	LED	3 x LEDs	
	Reset	1x Reset Button	
Rear Interface	FXS	2x VoIP Lines	Optional
	Ethernet	1x 1Gbps LAN	
		1x 10Gbps LAN	
	eBBU I/F	1x Phone Jack	Optional
PON	1x 10G EPON	BOSA on Board / DPOE2.0	
Power	Type	EPS	12V 1.5A
Dimension	L x W x H (mm)	190x140x40 mm	

HNB5804_10G xPON 11ax Dual-band Voice

➤ Product Overview

HNB5804-X60 is designed to deliver the highest WAN and LAN performance with advanced Wide Area Technology and high-performance Wi-Fi. This multiservice gateway provides optimal Wi-Fi performance in home as well as voice, video and data with up to 10G symmetrical broadband data speeds.

This gateway deliver high speed broadband services via 10G XGS-PON (up to 10/10Gbps) using a BoB (Bosa on Borad) technology.

This connectivity is complemented by an equally high-specification local networking: one 10G Ethernet, three 1G Ethernet, Wi-Fi with the Dual-band concurrent 4x4 802.11ax and VoIP.



* Design may change based on customer's requirements

		Description	Remark
System Resource	Main SoC	BCM68580X	-
	Flash Memory	NAND 512 MB	
	DRAM	DDR 1GB	DDR3-2133 512MB x 2
Wireless	2.4GHz	4x4 802.11ax	
	5GHz	4x4 802.11ax	
Front Interfaces	LED	10 x LEDs	
	WPS	1x WPS Button	2.4GHz and 5GHz simultaneously
	FXS	2x VoIP Phone Lines	RJ11 port x 2
Rear Interfaces	Ethernet	1x 10Gbps LAN	RJ-45, 10G Ethernet port x 1, With LED
		3x 1Gbps LAN	RJ-45, 1G Ethernet port x 3, With LED
	Reset	1x Key	Factory Default
Power	PON	1x SC	with Fiber Holder & Cover
	Type	EPS	
Dimension	L x W x H (mm)	51 x 204 x 230 mm	23 mm for stand

HNB5804_XGS-PON 11ax Wireless Gateway

➤ Product Overview

HNB5804-XE110T Broadband Gateway is designed to deliver the highest WAN and LAN performance with advanced Wide Area Networking technology and high-performance Wi-Fi. This multiservice gateway provides optimal Wi-Fi performance in home as well as voice, video and data with up to 10G symmetrical broadband data speeds.

This gateway deliver high speed broadband services via XGS-PON (up to 10/10Gbps) or XG-PON (up to 10/2.5Gbps) using a SFP+ (Small Form-Factor Pluggable) modules inserted in an embedded SFP+ cage.

This connectivity is complemented by an equally high-specification local networking: one 5G Ethernet, three 1G Ethernet, Wi-Fi with the tri-band concurrent 4x4 802.11ax and VoIP.



* Design may change based on customer's requirements

		Description	Remark	
System Resource	Main SoC	BCM68580X		
	Flash Memory	eMMC Flash 4GB		
	DRAM	DDR 1GB	DDR3-2133 512MB x 2	
Wireless	2.4GHz	4x4 802.11ax	Tri-band	
	5GHz	8x8 802.11ax	- 4x4 5G 11ax (x2) , - 4x4 2.4G 11ax (x1)	
Front Interfaces	LED	2x LEDs		
	WPS	1x WPS Button	2.4GHz and 5GHz simultaneously	
Rear Interface	USB	1 x USB2.0	USB 2.0 type A	
	FXS	2x VoIP Lines	RJ14 port x 1	
	Ethernet		1x 5Gbps LAN	RJ-45, 5G Ethernet port x 1
			3x 1Gbps LAN	RJ-45, Ethernet port x 3
	ONT	1x 1Gbps WAN	RJ-45, Ethernet port x 1	
	Reset	1x Reset Button		
Power	Type	EPS	12V 4A	
Dimension	L x W x H (mm)	89 x 198 x 184 mm		

OLT Device Interoperability



OLT Vendor	OLT Model	OLT Firmware Version
Huawei	MA5608T	XGSPON / GPON - SW Version : MA5600V800R017C10
	MA5800-X2	XGSPON / GPON - SW Version : MA5800V100R017C00
	MA5800-X17	XGSPON / GPON - SW Version : MA5800V100R019C00
ZTE	C300	XGSPON / GPON - SW Version : V2.1.0
	C320	XGSPON / GPON - SW Version : V2.1.0
Zyxel	OLT2506	XGSPON / GPON - SW Version : V4.01(AAVA.0)C0
FiberHome	AN5516-06	XGSPON / GPON - SW Version : RP1001
	AN6000-2	XGSPON / GPON
	AN6001-G16	XGSPON / GPON
NOKIA	ISAM7360	DPoE OLT - SW Version : 6.00d
		XGSPON / GPON - SW Version : R5.7.02b
	ISAM7362	XGSPON / GPON - SW Version : C5.502
	ISAM7342	XGSPON / GPON
Adtran	C9500	DPoE OLT - SW Version : R369
	C9516	DPoE OLT - SW Version : R369
	C9504	DPoE OLT - SW Version : R365
DASAN	V8300F	EPON OLT - SW Version : 10.09M
	V5808	XGSPON / GPON
	V5804	XGSPON / GPON
SUMITOMO	FSU7103	EPON OLT
G-com	NG01FN56A	GPON - SW Version : V100R001D001P008
	GL5610-08P	XGSPON / GPON
	GL5610-04P	
Raisecom	ISCOM5508-GP	XGSPON / GPON
	ISCOM5504-GP	XGSPON / GPON



New Kinpo Group

THANK YOU FOR YOUR ATTENTION.

INNOVATION · UNITY · GROWTH